

# STUDENT GUIDE



CHALMERS  
STUDENTKÅR

THE STUDENT GUIDE IS AN INSERT TO TOFSEN #3 2017

**This guide is published by  
Chalmers Student Union (Chalmers Studentkår).**

**Copy and illustrations:**

Student Union Communications department

**Photo:** Chalmers Film- och Fotocommitté

**Exceptions:** p. 10, 19, 22, 30, 31.

**Printed by Billes Tryckeri AB  
Copyright 2017**

# Contents

5	Being a student at Chalmers
6	Support, help and wellbeing
7	Your Student Union
8	16 Student Divisions
9	Organization
11	Membership benefits
12	Student Union Council
14	Council's committees
16	Student Union Management Team
18	Presidial Office
19	Educational Affairs
20	Student Welfare & Campus Life
21	Career and Business Relations
22	Management, finances, services & communications
24	Student Union Information Desk
	Members Portal
25	Chalmers Map
26	Facilities
28	The Student Union Corporation
30	Our companies
34	Restaurants, pubs & cafés
36	Volunteering and getting involved
38	Committees
47	Kårens Dag / Student Union Day
48	Societies
57	Student Divisions
64	3 steps to an easier student life
65	Map of restaurants, cafés and pubs



## What's inside?

About the Student Union  
Why is there a Student Union? Who runs it? And how is it run?  
Learn everything on p. 7

## Get involved

Play in a band, do sports, wear a prom dress, take pictures, arrange tastings or the largest indoor parties in Sweden. Getting involved is easy, fun and creates memories for life. p. 36





## Your Student Division

Most activities start at your own Student Division. Browse from A-Ö through your local list of committees and societies. p. 57

# Being a student at Chalmers

**From welcome day until graduation day the Student Union will care for you. We'll stand behind you when it gets tough and make sure that there are always fun things to do on your time off.**

On a daily basis your Student Division and the university are by your side regarding your courses, future and wellbeing. After graduation you'll be a part of a world wide network of alumni providing you with contacts and friends for the rest of your life.

World class education and the best student life on the planet. We aim high but that's also why we offer a gym hall, pool, sauna, study places, affordable lunches, course literature and our own convenience store - right on campus.

The idea is for you to use your time efficiently. The need to leave campus for basic everyday stuff is minimized, making sure you can hang out with your friends, being involved in activities and have fun in your free time. Neither should you have to leave campus for a good, affordable lunch, coffee, "fika" or snacks. And meanwhile we do our best to ensure that your world class education is maintained and improved.

Pool, sauna,  
laundry room and  
convenience store  
makes everyday life  
easier. All of them  
are owned by the  
Union.



# Support, help **and** **wellbeing**

**Student safety and welfare  
representative (SAMO)** at Student Divisions:

📍 [chalmersstudentkar.se/kontakt/sektioner](https://chalmersstudentkar.se/kontakt/sektioner)

**Chaplain (studentpräst)**

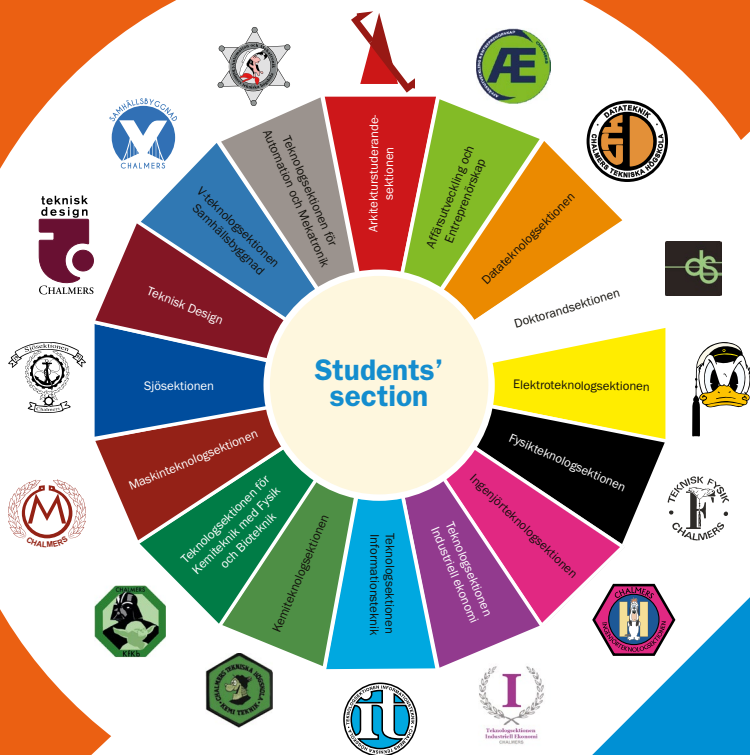
☎ 073 - 03 00 749

✉ [larsvanderheeg@chalmers.se](mailto:larsvanderheeg@chalmers.se)

# 16 Student Divisions

## (Teknologsektioner)

You're a member of both a Student Division and the Student Union. The divisions are independant and associated with a specific study program but a part of the Union. More on the divions on p. 57



# Your Student Union

*We're a membership organization run by its members - for its members. We're committed to everything concerning your student life during your time at Chalmers.*

All 11 000 students at Chalmers are members of the Union. That means 11 000 strong voices who can affect, change and make the student experience more fun and meaningful.

However without being properly organized things could easily get out of hand. That's why we have a Student Union Council who are elected by its members and who make the strategic decisions regarding the Union.

The everyday work is lead by a management team (*Kårledningen*) and of course all the thousands of volunteers within the Union. See how we're organized on [p. 9](#)



**"All members should thrive and develop throughout their time at Chalmers"**

*Chalmers Student Union vision*

## About the Union

Founded: 1904

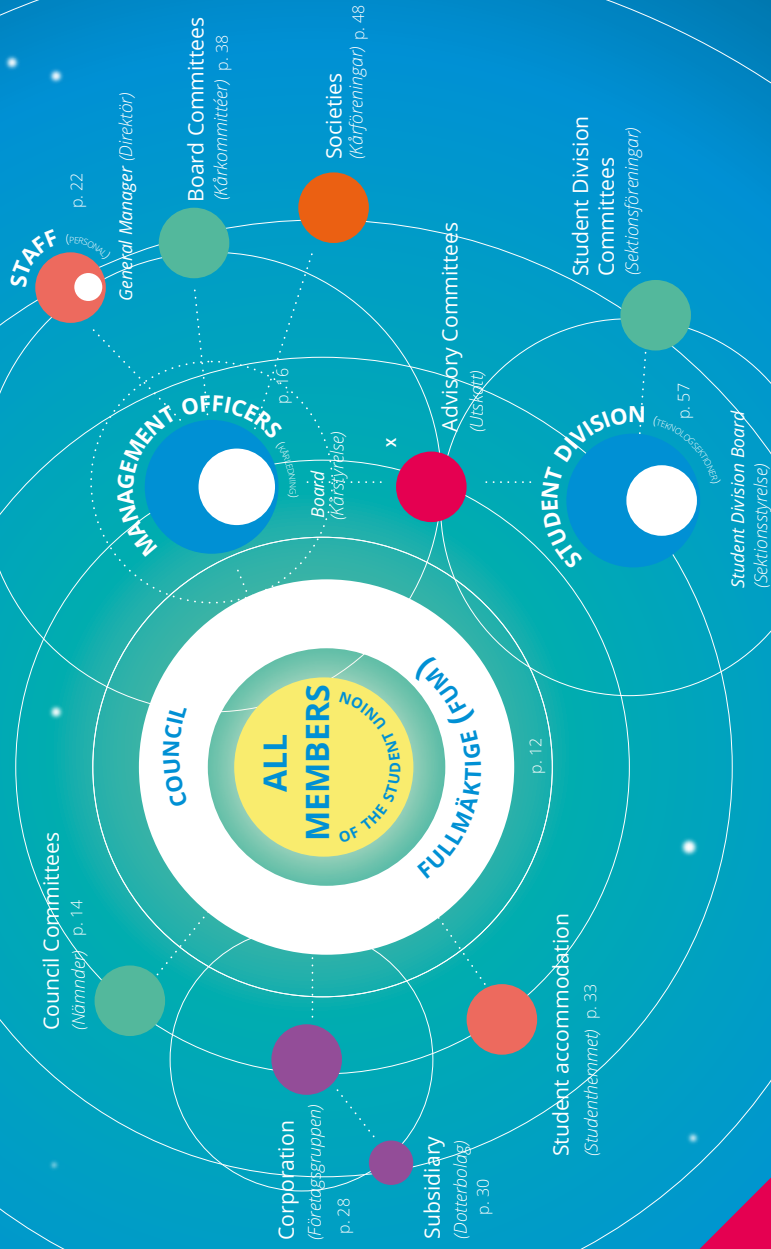
Members: 11 000

Annual turn-over: 255 mil. SEK

16 Student Divisions (*Teknologsektioner*)

8 companies

# Organization



# Membership BENEFITS

From affordable lunches to pool-access all year. The Student Union card is your key to all the benefits.

## Keeping fit

The Student Union building at Johanneberg hosts a large gym hall, free to use for all members. Bring your own equipment and book through [apius.chs@chalmers.se](mailto:apius.chs@chalmers.se). Use your card to access. **Read more >> p. 26**



## Meet the future

One of the largest careers fairs amongst the Nordic countries is our own CHARM-fair- connect with your future employers or co-workers during February each year.



## Getting involved

Whether it's scuba diving, building robots or sustainability the Student Union has it all. Check out all the amazing things you can do on page **p. 36**



## Convenience Store

Milk, snacks, ready-made local food, course literature, campus clothes, books, groceries, ice-cream. Our very own store has everything. **Read more >> [chalmersstore.se](http://chalmersstore.se)**

## Recreation

Why not relax, swim in the lake, sit by the open fire and just inhale the beautiful surroundings of our own sports cabin? You can also book group and music rooms for free. **Read more >> p. 26**



## Eating and drinking

Local and organic burgers, brunch, wide selection of beers, coffee, sandwiches, breakfast, smoothies. Whatever you're in the mood for, our cafes and restaurants probably has it. Always on campus and discounts with your Student Union card (cash free since 2015). Full list >> **p. 34 & 65**







FULLMÄKTIGE







# Student Union Council *(Fullmäktige)*

*35 student reps at the highest level of decision*

- All members can run for candidate and vote.
- Annual election in April/May.
- Assembly twice every study period.
- Decides about the Union's budget, constitution and statute, guidelines, policies and strategic paths. Also elects the Student Union's management team (*Kårledningen*) among other trustees.
- All members may attend the general meetings.
- All members have the right to motion at meetings.
- Speaker of the Student Union Council (*Talmanpresidiet*) are responsible for summoning and minutes for the meetings.

**Election website:** [www.fumval.se](http://www.fumval.se)

**Contact speaker:** [talmanpresidiet@chs.chalmers.se](mailto:talmanpresidiet@chs.chalmers.se)

# Council's committees

## *(Nämnder)*

*Nominates trustees and reviews Cortège and the Student Union election.*

**Committees are working groups assigned by the Council to perform a specific task. They report directly to the Council and the Student Union board has no influence over them.**

### **Nomination Committee**

*(Valberedningen)*

Assigned to pre-process the elections carried out by the Council. The committee recommends candidates for each position however, it is still the Council who makes the final decision. Nominations are based on interviews and the committee consists of five to eight members.

### **Committee of election complaints**

*(Besvärsnämnden)*

If a Student Union member suspects that the general election for Council has been carried out in a questionable manner, an appeal should be made to the committee. They investigate the matter and gives a recommendation to the election committee or the Council. The committee consists of the Student Union Inspector, the speaker of the Council and three additional members.

### **Committee of review of the Cortège**

*(Cortègens granskningsnämnd)*

Assigned to overlook the Cortège and its program. The Student Union Inspector is the President of the board and has veto on the Cortège's form.

### **Election committee**

*(Valnämnden)*

The election committee handles the general election for Council and strives for the election to be carried out in a democratic manner and according to the Union constitution.

Before the general election, the committee accepts candidate lists from each electoral alliance and decides when and where the elections will be held.



All members have the right to nominate themselves to any of the committees.

Please contact: Speaker of the Council (*Talman*)  
[talman@chs.chalmers.se](mailto:talman@chs.chalmers.se)  
The Vice President of the Union  
[vo@chalmersstudentkar.se](mailto:vo@chalmersstudentkar.se)

# Student Union Management Team

(Kårledningen)

These are your 9 student officers who've chosen to devote 1 year of their life to lead the Union on a daily basis. They are elected by the Council (*Fullmäktige*) and nominated by the Election Committee (*Valberedningen*).

All nine each belong to a special office. Education, student welfare, corporate relations and management.

The team and its staff is located in the Student Union building at Johanneberg.







# Presidial Office *(Presidieenheten)*

Consists of the President, Vice President and a Premises Officer.

.....

## President *(Kårordförande, KO)*

Together with the Vice President provides leadership for the management team. Apart from being the external spokesperson for the Student Union the President also makes sure we're delivering and working towards our vision and values.

☎ 031-772 39 02  
✉ ko@chalmersstudentkar.se

## Vice President *(Vice kårordförande, VO)*

Leads the daily work of the team members. The role also involves overview of the Union's finances and handling contacts with committees, Student Division committees and the Union Council.

☎ 031-772 39 01  
✉ vo@chalmersstudentkar.se

## Premises Officer *(Husansvarig, HA)*

Responsible for what's going on in the Student Union's facilities; the Student Union Buildings, the recreational facility in Härryda and the railway wagon. Helps members, committees and societies with questions related to the facilities and their operations.

☎ 031-772 39 15  
✉ ha@chalmersstudentkar.se





# Educational Affairs

## *(Utbildningsenheten)*

Our main purpose is ensuring the best academic experience here at Chalmers. With quality of education as our main purpose we ensure student influence at all levels within the university, from supporting student reps to meeting with the university. We and all the student reps around the Student Divisions make sure your concerns and opinions are heard.

.....

### Educational Affairs Officer

*(Utbildningsenhetens ordförande, UO)*

Works with academic matters and sit on many committees and meetings with the staff across the university to make sure your voice is heard.

☎ 031-772 39 12  
✉ [uo@chalmersstudentkar.se](mailto:uo@chalmersstudentkar.se)

### Educational Affairs Deputy Officer

*(Utbildningsenhetens ordförande, vUO)*

Works locally with student reps and Student Divisions to improve pedagogy and student's right among other things.

☎ 031-772 39 17  
✉ [vuo@chalmersstudentkar.se](mailto:vuo@chalmersstudentkar.se)

# Student Welfare & Campus Life

## *(Sociala Enheten)*

We want to ensure you are supported during your time at Chalmers. The Student Union provides a wide array of social activities to help you settle in. There are many services provided by the university and the Union to support you during your time here. More on these in the folder **"Who is here to help me?"** outside the Student Union information desk or at [bit.ly/chs\\_kontaktlista](https://bit.ly/chs_kontaktlista) (SE) or [bit.ly/chs\\_contacts](https://bit.ly/chs_contacts) (EN)

.....

### Student Welfare and Campus Life Officer

*(Sociala Enhetens ordförande, SO)*

Work with issues relating to student wellbeing; equality; student accommodation, CSN and issues affecting campus life. Represents you towards the university regarding study environment.

☎ 031-772 39 18  
✉ [so@chalmersstudentkar.se](mailto:so@chalmersstudentkar.se)

### Student Welfare and Campus Life Deputy Officer

*(Sociala Enhetens vice ordförande, vSO)*

Works closely with student volunteers who arrange organized dinners and parties within the Student Union and provides them with education and support for their events.

☎ 031-772 39 68  
✉ [vso@chalmersstudentkar.se](mailto:vso@chalmersstudentkar.se)







# Career & Business Relations

*(Arbetsmarknadsenheten)*

Concerns matters relating to employability, connecting students with the business and personal development from volunteering.

.....

## Career and Business Relations Officer

*(Arbetsmarknadsenhetens ordförande, AO)*

Works with the university and external businesses to ensure strong employability and connections to the business during your time at Chalmers.

☎ 031-772 39 04  
✉ [ao@chalmersstudentkar.se](mailto:ao@chalmersstudentkar.se)

## Career and Business Relations Deputy Officer

*(Arbetsmarknadsenhetens vice ordförande, vAO)*

The project manager for Scandinavias largest career fair for student, CHARM. Also works with personal development for volunteering students.

☎ 031-772 39 03  
✉ [vao@chalmersstudentkar.se](mailto:vao@chalmersstudentkar.se)



## Management, finances & services & communications

The Student Union's own staff provides us with skills and experiences from areas surrounding a large organization so that we can focus on student matters. These are our experts supporting mainly the management team but also the Union's committees.

### Contact

✉ [firstname.surname@chalmersstudentkar.se](mailto:firstname.surname@chalmersstudentkar.se)  
☎ 031 - 772 39 XX.

## Management



**Peter Alehammar** is the managing director. He oversees the strategic work for the Student Union and its corporation.

☎ -05



**Annelie Lycklund** and **Pernilla Junedahl** handles membership services and bookings.

Opening hours: [chalmersstudentkar.se/kårservice](http://chalmersstudentkar.se/kårservice)  
[exp@chalmersstudentkar.se](mailto:exp@chalmersstudentkar.se)

☎ -06



## Service

☎ -06

## Finances



**Lena Röxner** is head of finances for the Student Union and the Student Union Corporation.

☎ -24



**Pernilla Strömquist** and **Tency Lilja** works with the accounting for the Student Union and the Student Union Corporation.

☎ -32



☎ -32

## Communications



**Noëlle Madsen** is responsible for the communication within the Union. She also supports the Union's committees.

☎ -61



**Mikael Oskarsson** works with communication focused on graphic design. He's also in contact with the student divisions information officers.



**Sebastian Johansson** is our superintendent who takes care of maintenance of our houses and facilities.

## Property

# Student Union Information Desk (Kårservice)

We can help you with:

- questions and concerns regarding your membership and fees
- bookings for the railway car and Härryda
- updating your information
- support with general access issues

🕒 For opening hours see the website

## Contact

✉ [exp@chalmersstudentkar.se](mailto:exp@chalmersstudentkar.se)

☎ 031-772 39 06

🌐 [www.chalmersstudentkar.se/kårservice](http://www.chalmersstudentkar.se/kårservice)

📍 Kårservice Johanneberg is located opposite J.A. Pripps Pub & Café

📍 Kårservice Lindholmen is located in Forskargången 4.

## Members Portal

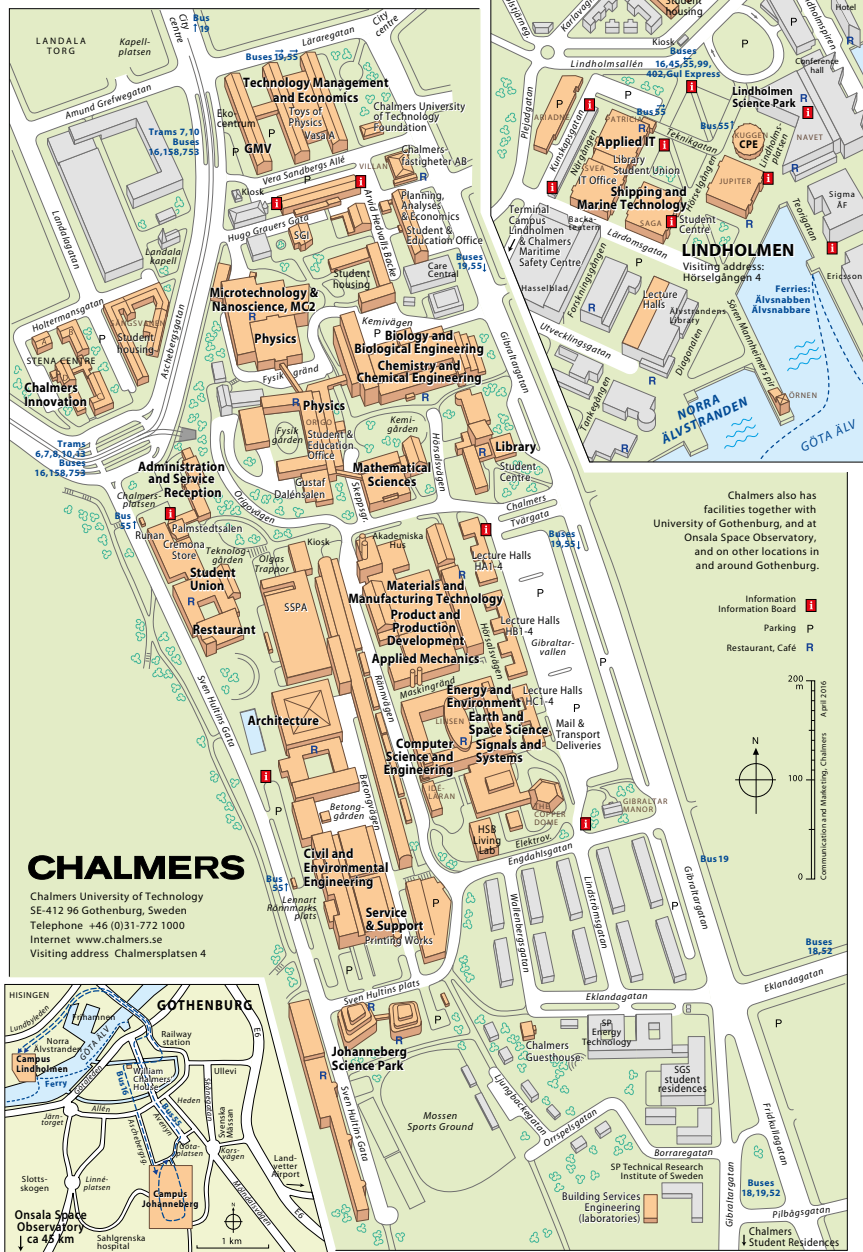
🌐 [medlem.chs.chalmers.se](http://medlem.chs.chalmers.se)

*Pay your members fee, update info and much more. Login with your CID.*



### Manage your information

- postal address
- e-mail address
- receipt of paid fee
- print new invoice
- unsubscribe for newsletter







# CHALMERS KÅRHUS



## Facilities

Sweden's largest Student Union building. An idyllic recreational area and a railway car. Some of many things that provide students with leisure, a place to study and arrange activities. A lot of the Union work is being conducted in the facilities and members can interact with those active within the Union.



**Booking &  
more information:**  
[chalmersstudentkar.se/  
vara-lokaler](http://chalmersstudentkar.se/vara-lokaler)

*About 20 km east of Gothenburg (Härryda) our very own recreational area is located, overlooking lake Sandsjön. Come here anytime to chop some wood, go fishing, swimming and finish with a hot sauna.*

*All chalmersists may at any time visit the area, according to the so called "Chalmerska allemansrätten".*

### **Sports cabin**

Cosy and fully equipped cabin with kitchen, toilets, showers, beds and an open fireplace.

### **Grand cabin**

Built in 2016, this cabin of splendour offers a grand view of lake Sandsjön and can hold up to 120 sitting guests. Complete with two floors and a restaurant style kitchen.

### **C.S. Sauna**

Lakeside wooden sauna built by Teknologföreningen C.S. in 1964 and given to the Union on our 100<sup>th</sup> birthday. Renovated in 2016 with a dual heating units (wood and electricity). Presumably the largest student owned sauna in the world, fitting 60 people.

### **Sleeping cabin**

Cosy cabin with 15 beds in a shared room.

### **Railway car**

In 2004 the Student Union received a railway car from SJ. This is now used for conferences, parties and hangouts for both old and existing members of the Union as well as companies and is located next to Geniknölen on campus Johanneberg.

### **Union building Johanneberg**

Sweden's largest Student Union building, built in 2001, adding on to the existing building from the 1950's (today called "Kyrkan"). The new part is drawn by architect Gert Wingårdh (A75) and has won the Kasper Sahl-in-prize. Includes a conference area, cinema, sauna, indoor pool, gym hall, night club, convenience store, group rooms, music room, pub and three restaurants.

This is also where the Student Union officers, the staff, information desk (*Kårservice*) and most of the Union committees are situated.

### **Union building Lindholmen**

Located in the heart of campus the Union building at Lindholmen provides affordable lunches, lots of light and a Union bookstore. There is also a small office weekly used by your Student Union management team in order to answer any questions you might have.

# Restaurants, pubs & cafes

Affordable food, chilled or hot beverages and good times. At Chalmers campus there are plenty of restaurants, pubs and cafes where you can take a break from your studies. Some are open daily, others only on special occasions. Top up and pay with your student card so you'll never miss your discounts.

## **Kårrestaurangen**

(Student Union building Johanneberg)

This is our main lunch restaurant where we also host large banquets. Choose between traditional dishes of meat, vegetarian or fish or soup of the week.

## **J.A. Pripps Pub & Café**

(Student Union building Johanneberg)

During the day we have everything you need for a nice coffee break. During the afternoon the beer taps open and in the evening our kitchen serves great food at affordable prices.

## **Express**

(Student Union building Johanneberg)

Serves take-away lunch at very student friendly prices. Pay with your topped up student card.

## **STORE**

(Student Union building Johanneberg)

STORE for all your needs is open from early morning until late night 7 days a week. Course literature, food, snacks, medicals, stationery, coffee, hoodies and freshly made sandwiches are only some of the things you will find here.

## **Restaurang Hyllan**

(Student Union building Johanneberg)

This is where you go to enjoy a culinary meal in a relaxed environment. If you want to have a meeting in connection to your lunch you can reserve our VIP-room.

## **Café Bulten** (M-building)

Here you can enjoy an espresso in a nice and relaxed environment. Café Bulten is the only café at Chalmers which is run as a non-profit organization by the students.

## **Café Bra NyFiket** (Physics building)

Besides take-away lunch, the café offers a complete café selection of homemade cinnamon rolls, cakes and fresh sandwiches in different price ranges.

## **Hedvalls** (Chemistry building)

The green cuisine – healthy, low fat and good. Unique environment with a large terrace when the weather is nice.

## **S.M.A.K.** (A-building)

In the A-building you will find a brand new S.M.A.K. with a complete café selection and simpler alternative for lunch.







**Café Linsen** (EDIT-building)

Asian kitchen, noodle bar and café. Offers a wide range of both warm and cold dishes based on the availability of products, but with a few constant favorites, like the chicken wok.

**Bibliotekscaféet, B.C.** (the Library)

Besides take-away lunch, B.C. offers a complete café selection of home-made cinnamon rolls, cakes and fresh sandwiches in different price ranges.

**Wijkanders** (Vera Sandbergs Allé 5B)

We offer a contemporary and high quality yet affordable lunch in our spacious restaurant located in the heart of campus Johanneberg. We serve a mix of classic Swedish and French cuisine daily.

**Café Vera** (I-building)

A brand new take away coffee shop with great coffee and tasty assortments.

**Kokboken**

(Student Union building Lindholmen)  
Offers everything from student literature, good coffee, pastries, ice cream, candy, salads, sandwiches and a nice atmosphere. During lunch we serve our express take away lunch.

**Café C** (Lindholmen Science Park)

Cozy small coffee shop with great coffee and tasty assortments

**L's Kitchen** (Lindholmen Science Park)

Food court with five dishes every weekday.

**L's Resto** (Lindholmen Science Park)

We offer a high quality lunch for conference or walk in guests.

**L's Express** (Lindholmen Science Park)

We serve take-away lunch during lunchtime with same dishes as L's Kitchen.

See map of restaurants,  
cafés and pubs on p. 65





GET INVOLVED



# Here's how you **get involved**

## *Where does all the fun come from?*

***It is the student's who run the Union. All the parties, fun, tastings, movies, theater shows, orchestras and receptions - these are thanks to volunteering students. Find new friends, gather experiences and have fun - the reasons for getting involved are many.***

## **Student Union Committees**

To join the committees within the Student Union you normally have to "aspa" which means no strings attached while you meet the committee and learn more about their assignment.

**More on p. 38**

## **Student Union Council**

It's in the Student Union Council and it's appointed committees the big decisions are made. Candidate for Council, speaker or join the nomination committee.

**More on p. 12**

## **Company board member**

Our many companies need student board member almost annually.

**More on p. 29.**



*Snap, write and layout  
for the Student Union  
magazine*



*Love sports?  
Join one of our many  
societies!*



### ***Student Division***

A lot of people join societies at their own Student Division. Each division normally provides a wide range of activities to choose from.

**Find your division on p. 57**



### ***Student Union Societies***

These fall under the Student Union meaning that half of the members are students at Chalmers but basically anyone can join. Societies determine their own activities.

**More on p. 48**

### ***Student Union Management***

Nine sabatical trustees run the daily work of the Union every year. They are nominated by the nomination committees and elected by the Student Union Council.

**More on p. 16**





# Committees

*Committees are appointed a task by the Council. It can be anything from arranging Cortège to document and photograph the activities within the Union. Any member can apply for committees.*





## Chalmers Studentkårs Film- och Fotocommitté (CFFC)

✉ [cffc@cffc.se](mailto:cffc@cffc.se)  
🌐 [www.cffc.se](http://www.cffc.se)  
☎ 031-772 39 25  
f /cffcchalmers



We are the Student Union's Film and Photo Committé. We photograph almost all main events within the Student Union, everything from the big parties in the Union building to

smaller events and portraiture. We are here to document and convey the activities of the Union towards its members.

---

## Chalmers Cortège Committé (CCC)

✉ [ccc@cortegen.se](mailto:ccc@cortegen.se)  
🌐 [www.cortegen.se](http://www.cortegen.se)  
☎ 031-18 45 35  
f /ChalmersCortègeCommitte



Every spring Gothenburg citizens gather to behold the Cortège. The parade is created by chalmers who construct their own vehicles and amusing sceneries. CCC organizes the

event, the building week and entertainment in between. Partake in the fun and keep a tradition since 1909 alive: Join the Cortège!

---





## Chalmersspexet Vera

✉ [vera@chalmersspexet.se](mailto:vera@chalmersspexet.se)

🌐 [vera.chalmersspexet.se](http://vera.chalmersspexet.se)

f [/chalmersspexetvera](https://www.facebook.com/chalmersspexetvera)



Every year in november and february, Chalmersspexet Vera presents a humoristic musical theatre about a historical figure. With music and dance in the centre we give you an alternative

version of the actual story, including everything from intrigues to romance and betrayal. Hope to see you in RunAn!

---



## Chalmers Pyrotekniska Kommitté (Pyrot)

✉ [info@pyrot.se](mailto:info@pyrot.se)

🌐 [www.pyrot.se](http://www.pyrot.se)

☎ 0734-075693

f [/chalmerspyrot](https://www.facebook.com/chalmerspyrot)



We are artists painting the sky. Working with professional fireworks we produce amazing displays for everyone, synchronized with music or just a huge show. We also sell a variety of

consumer fireworks if you want to brighten up your special occasion yourself. And of course with a student discount.

## Svea Skivgarde

✉ [info@svea.chs.chalmers.se](mailto:info@svea.chs.chalmers.se)

🌐 [www.sveaskivgarde.se](http://www.sveaskivgarde.se)

f [/sveaskivgarde](#)



Svea Skivgarde deejays at parties both at Chalmers and off campus. Currently we are 13 DJs where everyone has a different taste in music which make us have a wide range of

music knowledge. If you feel this is something for you check out our webpage, no previous experience is needed!

---

## GasqueKommittén (GasqueK)

✉ [info@gasquen.se](mailto:info@gasquen.se)

🌐 [gasquen.se](http://gasquen.se)

f [/GasqueK](#)



GasqueK is the committee that runs the Student Union nightclub at Chalmers. We make sure everything is in order for our arrangers when it's their time to host a party.

You can also find us behind the bar first Thursday of every study period for Chalmers Pubcrawl. Come have a cold one and say hello!

---

## The CHARM Committee

✉ [info@charm.chalmers.se](mailto:info@charm.chalmers.se)

🌐 [www.charm.chalmers.se](http://www.charm.chalmers.se)

☎ 031-77 23 904

f [/CHARMkommitten](#)



CHARM, is one of Scandinavia's leading career fairs that is arranged every February on Chalmers campus. There are over 170 companies from different areas of business coming to

CHARM to meet our students and show the students what they have to offer during and after their studies



## Chalmers International Reception Committees (CIRC)

✉ [info@circ.chalmers.se](mailto:info@circ.chalmers.se)

🌐 [www.circ.chalmers.se](http://www.circ.chalmers.se)

☎ 031 772 39 51

f [/CIRCPage](#)



We break first ice by organizing events for international students, integrating various nationalities, making students feel like home and showing that university is also about having

FUN with AMAZING people! Want to become part of something special? JOIN US or BECOME PHADDER! Interested? Contact us!

## Chalmers Bastukommitté / Chalmers Sauna Committé (CBK)

✉ [bastu@cbk.chs.chalmers.se](mailto:bastu@cbk.chs.chalmers.se)

🌐 [www.cbk.chs.chalmers.se](http://www.cbk.chs.chalmers.se)

f [/ChalmersBastukomitee](#)



Most parts of the world call it sauna. In Sweden we call it bastu. No matter what word you use, Chalmers Sauna Committee (CBK) is dedicated to enjoying the better things in life: nature,

craftsmanship, and spending time - quiet or high spirited - in the heated rooms from which we take our name.

## Jämlikhetskommittén (JämK)

✉ [info@jamk.chs.chalmers.se](mailto:info@jamk.chs.chalmers.se)

🌐 [jamk.chs.chalmers.se](http://jamk.chs.chalmers.se)

f [/chs.jamk](https://www.facebook.com/chs.jamk)



The Student Union Committee for Equality, JämK, is a committee whose task is to further and work with questions regarding equality on campus. We organize different events during

the year, and want to create a meeting point for discussions and knowledge of inclusion and diversity.

---

## Programkommittén PU

✉ [info@pu.chs.chalmers.se](mailto:info@pu.chs.chalmers.se)

🌐 [www.pu.chs.chalmers.se](http://www.pu.chs.chalmers.se)

f [/ProgramkommittenPU](https://www.facebook.com/ProgramkommittenPU)



Our task is to provide a wide spectrum of cultural activities and events for the Student Union members and chalmerists. We host

various events like concerts, movies, evening classes, tastings and much more. Keep an eye on our website for dates and schedules.



## Chalmers Studentkårs Marskalksämbede

✉ [marskalk@marskalk.chs.chalmers.se](mailto:marskalk@marskalk.chs.chalmers.se)

🌐 [www.marskalk.chs.chalmers.se](http://www.marskalk.chs.chalmers.se)

f [/Marskalkambetet](https://www.facebook.com/Marskalkambetet)



Marskalksämbedet or the Ceremony Committee, represents Chalmers Student Union at ceremonial occasions. Our main events are the annual fall- and spring balls as well as

the traditional changing of the Chalmers cap twice a year. We also preserve and manage the Union's and Student Division's standards.

---



## Mottagningskommittén (MK)

✉ [info@mk.chs.chalmers.se](mailto:info@mk.chs.chalmers.se)

🌐 [www.mk.chs.chalmers.se](http://www.mk.chs.chalmers.se)

f [/mottagningskommitten](https://www.facebook.com/mottagningskommitten)



We in MK work with the long-term development of the reception. MK works as a central coordinator of the reception at Chalmers by bringing together the Student Divisions, the

Student Union and the university. In addition to that we also arrange the first day at Chalmers and "Mottagningskampen".



## Festkommittén FestU (FestU)

✉ [festu@festu.se](mailto:festu@festu.se)

🌐 [www.festu.se](http://www.festu.se)

☎ 031-20 66 66

f [/festuchalmers](https://www.facebook.com/festuchalmers)



Festkommittén FestU organizes some of the biggest recurring indoor parties in Scandinavia where both people who study at Chalmers and those who don't are welcome. The parties

contain live acts, numerous bars and dance floors as well as jumping castles and other awesome activities.

---

## G.U.D.

✉ [support@chs.chalmers.se](mailto:support@chs.chalmers.se)

🌐 [gud.chs.chalmers.se](http://gud.chs.chalmers.se)

f [/KommittenGUD](https://www.facebook.com/KommittenGUD)



G.U.D. är kårens IT-avdelning. Vi har till uppgift att sköta allt som ligger bakom det som användarna ser, t.ex. är det vi som skapar alla datorkonton som används på kårens datorer. Det är vi som ser till att det centrala

i IT-infrastrukturen fungerar som det ska, som exempelvis brandväggar, switchar, servrar och även kårledningens och, i viss mån, även kommittéers datorer.

---

## The International Association for the Exchange of Students for Technical Experience (IAESTE)

✉ [goteborg@iaeste.se](mailto:goteborg@iaeste.se)

🌐 [www.iaeste.se](http://www.iaeste.se)

f [/iaeste.goteborg](https://www.facebook.com/iaeste.goteborg)



IAESTE is sending Chalmers students all over the world on paid internships whilst taking care of foreign trainees in Göteborg. We arrange events for our trainees and help you on your

way abroad. International internships gets posted on our webpage as well as on facebook, so keep your eyes open!



## Chalmers Kårtidning Tofsen

✉ [pr@tofsen.chs.chalmers.se](mailto:pr@tofsen.chs.chalmers.se)

🌐 [www.tofsen.se](http://www.tofsen.se)

f [/tofsenchalmers](https://www.facebook.com/tofsenchalmers)



Do you want entertainment, useful hints and/or exciting debate articles? Look no further! We are Tofsen - the Student Union magazine produced by students, for students! We founded in 1944

and have since then entertained Chalmerists at the beginning of each study period. Grab a copy of Tofsen, now!

## Ljud- och Bildgruppen (LoB)

✉ [info@lob.chs.chalmers.se](mailto:info@lob.chs.chalmers.se)

🌐 [www.lob.chs.chalmers.se](http://www.lob.chs.chalmers.se)

☎ 031-77 23 922

f [/lobchalmers](https://www.facebook.com/lobchalmers)



LoB is supplying rental of sound and event lightning to a reasonable price. We also act as technicians at various concerts and are responsible for all sound and lightning at Festu

parties and other events on campus. We have everything you need to arrange small parties to big concerts!



## Chalmersspexet Bob

✉ [bob@chalmersspexet.se](mailto:bob@chalmersspexet.se)  
 🌐 [www.bob.chalmersspexet.se](http://www.bob.chalmersspexet.se)  
 ☎ 031-16 46 67  
 f /ChalmersspexetBob



Each year, Chalmersspexet Bob puts on a musical theatre about a famous historical figure, where we tell history the way it really happened. Don't miss this show packed with

humor, dance and music! We play most of our shows in RunAn. One of our shows this fall is with English subtitles.

## Kårhuskommittén KåK

✉ [info@kak.chs.chalmers.se](mailto:info@kak.chs.chalmers.se)  
 🌐 [www.kak.chs.chalmers.se](http://www.kak.chs.chalmers.se)  
 f /karhuskommitten



Kårhuskommittén, KåK, works with trying to improving the Student Union building and the railway car. We want to achieve a nice and orderly building with a touch of cosiness. We

are also responsible for making sure that the other people using the building and the railway car does it in a good way.



# Societies

*The Student Union societies are run by students but open for everyone. At least half of the members must be members of the Union. If you miss a society why not start your own?*

---

## Chalmers Barockensemble

- ✉ [info@barocken.se](mailto:info@barocken.se)
- 🌐 [www.chalmersbarockensemble.se](http://www.chalmersbarockensemble.se)
- f [/ChalmersBarockensemble](#)



Does your instrument miss you? Are you interested in playing music, seeing porcelain being destroyed, hearing music played in unexpected ways and much more? Then you

should come and rehearse with Chalmers Baroque Ensemble! The rehearsals are held on Wednesdays, please contact us for more info.

## Chalmers Handbollsklubb (CHK)

✉ [chalmershk@gmail.com](mailto:chalmershk@gmail.com)

🌐 [www.laget.se/chalmershk](http://www.laget.se/chalmershk)

☎ 735834722



Chalmers HK is the handball society of the Student Union.

We have both a women's and a men's team, which play games in the forth and fifth division

in Gothenburg respectively.

We always welcome new players to come and practice with us, but it is preferred if you have some earlier experience.

---

## Chalmers Kristna Grupp (CKG)

✉ [info@ckg.chs.chalmers.se](mailto:info@ckg.chs.chalmers.se)

🌐 [www.ckg.chs.chalmers.se](http://www.ckg.chs.chalmers.se)

f /Chalmers-Kristna-Grupp



CKG is a society open to everyone looking for a Christian fellowship on campus. We meet once a week on both campuses for lunch prayer, and we are usually at the FestU parties and

pubcrawls to give out coffee, have a chat and tell about Jesus. We also arrange quite popular lunch lectures every year.

---





## World Values Initiative (WVI)

- ✉ [gbg@worldvaluesinitiative.com](mailto:gbg@worldvaluesinitiative.com)
- 🌐 [www.worldvaluesinitiative.se/gothenburg](http://www.worldvaluesinitiative.se/gothenburg)
- f [/World Values Day - Sverige](#)



Inspirational speakers and experience-based workshops are the core of the events arranged by the non-profit organization World Values Initiative (WVI). Our aim is to make students

and organizations aware of the importance of values and how they affect us, both in our personal and professional life.

---

## Chalmers Studentkärs Idrottssällskap (CIS)

- ✉ [info@cis.chs.chalmers.se](mailto:info@cis.chs.chalmers.se)
- 🌐 [www.cis-chalmers.se](http://www.cis-chalmers.se)
- f [/ChalmersIS](#)



CIS is a society built by different sport sections available for all students. We offer golf, swimming, cycling, soccer, floorball, rowing and badminton. You choose which sport you

want to pursue. Read more about us on our website and register as a member today! We are "Students United by Sports"!

---

## Society for Biological Engineering Student Chapter Chalmers

- ✉ [info@sbe.chs.chalmers.se](mailto:info@sbe.chs.chalmers.se)
- 🌐 [www.sbechalmers.se](http://www.sbechalmers.se)
- f [/SBESocietyChapterChalmers](#)



Society for Biological Engineering is an international network for engineers and students interested in chemical and biological engineering. We get inspired by the latest research

and create personal relations to postdocs and professors. Become a member for free and let's explore!



## BEST

✉ [gothenburg@best.eu.org](mailto:gothenburg@best.eu.org)

🌐 [www.best.chs.chalmers.se](http://www.best.chs.chalmers.se)

f [/BestGothenburg](https://www.facebook.com/BestGothenburg)



In BEST, we travel, organise events and train our soft skills in a multicultural environment spread across Europe. We are connected by the common goal to develop students through

Academic Courses, Engineering Competitions and exclusive events for BESTies, such as Trainings and other fun activities.

## Chalmers Dykarklubb (CDK)

✉ [info@chalmersdykarklubb.se](mailto:info@chalmersdykarklubb.se)

🌐 [www.chalmersdykarklubb.se](http://www.chalmersdykarklubb.se)

f [/groups/4293653789/](https://www.facebook.com/groups/4293653789/)



Do you have a scuba certificate or do you want to get one? Then, Chalmers Scuba Diving club (CDK) is the association for you! We dive year round, both locally around Gothenburg but

also further away such as Norway or Gotland. We have DykFika (Dive-sack) every Thursday at 1900 in the M-basement.

## Chalmers Students for Sustainability

- ✉ [board@css.chs.chalmers.se](mailto:board@css.chs.chalmers.se)
- 🌐 [www.css.chs.chalmers.se](http://www.css.chs.chalmers.se)
- f [/ChalmersStudentsforSustainability](#)



Did you know Chalmers was the first university in Sweden to divest from fossil fuels?

Well this are the kind of things we do at Chalmers Students for Sustainability, we

help Chalmers become a global example of sustainability through exciting projects.

---

## Chalmers Börssällskap

- ✉ [info@cbs.chalmers.se](mailto:info@cbs.chalmers.se)
- 🌐 [www.cbs.chalmers.se](http://www.cbs.chalmers.se)
- f [/ChalmersBorssallskap](#)



Chalmers Börssällskap (CBS) is the economic association on Chalmers. CBS is the largest association of Chalmers with its 1000 members. The association's purpose is to spread knowledge and promote interest

in economics and entrepreneurship. The most common activity is lunch lectures by well-known people from business, economic and politics.

---

## Chalmers Skytteförening

- ✉ [info@skytte.chs.chalmers.se](mailto:info@skytte.chs.chalmers.se)
- 🌐 [www.skytte.chs.chalmers.se](http://www.skytte.chs.chalmers.se)
- f [/chalmersskytte](#)



We bring the wonderful world of shooting sports to the campus! At our shooting range in the basement of Maskinhuset we practice our shooting skills every week with both air

rifle and pistol. On Tuesday evenings we're open for anyone to come and try it out, no previous experience is necessary.

## Chalmers Islamiska Föreningen (CIF)

✉ [info@cif.chs.chalmers.se](mailto:info@cif.chs.chalmers.se)  
🌐 [www.cif.chs.chalmers.se](http://www.cif.chs.chalmers.se)  
f [/ChalmersIslamiskaForeningen](#)



CIF is a non-political student association at Chalmers. Our mission is to strengthen Islamic brotherhood and sisterhood among the Muslims. We arrange activities inclu-

ding weekly Jumu'ah prayer at Chalmers (Johanneberg campus), lectures, and social activities for our members.



## Motus

✉ [contact@motuschalmers.com](mailto:contact@motuschalmers.com)  
🌐 [www.motuschalmers.com](http://www.motuschalmers.com)  
f [/motuschalmers](#)  
☎ 0768-784224



Motus is a society which major focus is production of music and video. The society acts like a venue for students who want to bring out their

talents of music, video or pure production. *We discover, we produce, we distribute.*

## E-Sektionens teletekniska avdelning (ETA)

✉ [eta@eta.chalmers.se](mailto:eta@eta.chalmers.se)  
🌐 <http://eta.chalmers.se/>  
f /ETAchalmers  
☎ 031-20 78 60



Ever heard of the term Makerspace? A makerspace is just what it sounds like, a space to make things, and ETA is one of the major makerspaces here at Chalmers with a focus

on Electronics and ham radio. Hence if you're itching to learn, build or just play around with something, just come on up.

---

## Chalmers Hockey

✉ [chalmershockey@gmail.com](mailto:chalmershockey@gmail.com)  
🌐 [www.laget.se/ChalmersHockey](http://www.laget.se/ChalmersHockey)  
f /Chalmers Hockey  
☎ 768358420



Motus is a society which major focus is production of music and video. The society acts like a venue for students who want to bring out their

talents of music, video or pure production. *We discover, we produce, we distribute.*

---

## RANG - Chalmers Indian Association

✉ [info@gorang.se](mailto:info@gorang.se)  
🌐 <http://www.gorang.se/about-us/>  
f /RangChalmers  
☎ +46 79 039 85 06



RANG started with a group of students who wanted to reach out to prospective Indian students with information about Chalmers and Gothenburg. Over the years it has also

evolved into a platform that showcases Indian culture through student-centric events that is open to all.



## Chalmers Ballong Corps (CBC)

✉ [styret@cbc.chalmers.se](mailto:styret@cbc.chalmers.se)

🌐 [cbc.chalmers.se](http://cbc.chalmers.se)

f [/ChalmersBallongCorps](https://www.facebook.com/ChalmersBallongCorps)



Chalmers Ballong Corps is the Student Union's own hot air ballooning society. We arrange flights in and around Gothenburg, and sometimes internationally. All chalmersists

are welcome to join, whether they have experience flying or not. The really eager also has the opportunity to become a balloon pilot.

---

## Tekniskt Basårs Kårförening (TBK)

✉ [tbkchalmers@gmail.com](mailto:tbkchalmers@gmail.com)

f [/tbkchalmers](https://www.facebook.com/tbkchalmers)



Tekniskt Basårs Kårförening (TBK) helps the students at Tekniskt Basår to a good start at Chalmers by introducing them to life at Chalmers and to meet new people. TBK

arranges reception and then supports the students for the rest of their year. TBK consists of a board of nine members and phaddrar.

---

## Chalmers Sångkör

✉ [choir@chs.chalmers.se](mailto:choir@chs.chalmers.se)

🌐 [www.chalmerssangkor.se](http://www.chalmerssangkor.se)

f [/chalmerschoir](https://www.facebook.com/chalmerschoir)



Chalmers choir is the oldest student association with 100 members divided in three choirs: The chamber-, male-, and female choir. We participate in events by the Student Union

and give own concerts such as the annual Christmas concerts at Vasa Church and also attend during Lucia.

## Chalmers Segelsällskap (ChSS)

✉ [info@chss.chs.chalmers.se](mailto:info@chss.chs.chalmers.se)

🌐 [www.chalmerssailing.se](http://www.chalmerssailing.se)

f [/ChalmersSailingSociety](https://www.facebook.com/ChalmersSailingSociety)



*Are you a sailor or have always dreamed of being one? ChSS is a club of salt stained students who enjoys every aspect of the Gothenburg archipel-*

*ago together. We have two boats with which we go sailing regularly. We are open to both experienced sailors and beginners, racers and cruisers.*



## More Student Union Societies

BAMSE

Chalmers Aerospace Club - Chalmers

Rymdgrupp

Chalmers Alternative Sports

Chalmers Barockensemble

Chalmers Danssällskap

Chalmers Entrepreneurship Society

Chalmers Kina Grupp

Chalmers Shito-Ryu Karateklubb

Chalmers Orienterings Löpare

Chalmers Robotförening

Chalmers Rock Club

Chalmers Studentkårs Flippersällskap

Chalmersbaletten

E-Sektionens Teletekniska Avdelning

Iranian Students Association at Chalmers

Lindholmen Makerspace

RANG - Indian Chalmers Student Association

REACT

*Read more: [www.chalmersstudentkar.se](http://www.chalmersstudentkar.se)*



EXPRESS



# The Student Union Corporation

*Our companies provide our members with  
jobs, affordable lunches and services.*



"...GETTING THAT  
LITTLE EXTRA  
SOMETHING FROM  
CHALMERS."



# Student friendly services - run by students

**Our companies serve the student union members with great benefits, experience through jobs and daily services on campus.**

The student union corporation is a well-operated organisation who handles most parts of the business within the Student Union. Apart from this we run a couple of companies that supplement the range that the non-profit part of the organisation provide.

## **Financial benefits for our students**

*Commercial businesses should not profit from our students - that's why our profits are reinvested into our business.*

It matters greatly to us that private commercial businesses can't overcharge students on campus.

All the business within our companies therefore aim to not just be affordable but even give discounts. The restaurants can provide discounts due to our conference center that brings us the necessary profits to reinvest for our members. Relevant services and affordable prices are part of these reinvestments.

## **Service on campus**

*Your time is valuable* – that's why we want to provide services that makes student's every day life easier. All students should have access to affordable services. Affordable might not always mean the cheapest at all costs because we also regard quality and

environmental issues. The Student Union also wants the services to be adapted to student's time frames rather than the most lucrative opening hours.

## **New experiences**

*Every student should get that little extra something from Chalmers* – that's why we provide opportunities to develop your skills and talents.

Having a corporation with both employees and trustees as well as non-profit projects gives our members chances to try being a CEO for a year, doing sales and marketing, being a consultant or working with human resources while studying.

## **Being a board member**

Each company within the corporation has its own board. To ensure student focus each board has student members. Being a board member does not only give you influence but also valuable experience. *More on p. 32.*

## **Who decides in the end?**

It is the Student Union Council who determine what the corporation should focus on. *More on p. 12*

**"...SERVICES THAT  
MAKES EVERYDAY  
STUDENT  
LIFE EASIER."**

**Contact us:**

 [info@foretagsgruppen.com](mailto:info@foretagsgruppen.com)

# Our companies



## Chalmers

konferens och restauranger

### Johanneberg

Chalmers Student Union Restaurants Ltd. also known as Chalmers Conference & Restaurants, today operates twelve restaurants and cafe's within the Chalmers Campus. We also have a conference and banqueting operation within the Student Union building.

### Lindholmen

Our company operates conference facilities, restaurants and cafe's at Lindholmen Science Park and Chalmersska House. We have a variety of food concept's that make up L's Kitchen which is the main food concept. L's Resto - business restaurant, Café C, Lindholmens Conference Centre is a conference facility and Chalmersska House which is a classic conference and banqueting operation.



[bokningjohanneberg@chalmerskonferens.se](mailto:bokningjohanneberg@chalmerskonferens.se)



[bokninglindholmen@chalmerskonferens.se](mailto:bokninglindholmen@chalmerskonferens.se)



[www.chalmerskonferens.se](http://www.chalmerskonferens.se)



031-7723950





CREMONA  
CHALMERS BOKHANDEL

STORE opened in August 2015 and will serve students, employees and others with generous opening hours, food, drinks, groceries and course literature.

Our premade meals, snacks and sandwiches are made on campus to ensure great quality at affordable costs. We only work with the best partners when it comes to sustainable coffee and make sure students get the best prices for their course literature.

Visit the website for more information.

✉ [store@chalmerskonferens.se](mailto:store@chalmerskonferens.se)

🌐 [www.chalmersstore.se](http://www.chalmersstore.se)

☎ 031-772 52 64

f [/chalmersstore](https://www.facebook.com/chalmersstore)

Cremona sells course literature, and other things you may need for your studies as well as the traditional Chalmers Cap, Chalmers clothing and gifts. Visit us on Books & Bars at the start of each semester or at our webshop [www.cremona.se](http://www.cremona.se). You will also find a wide selection at Store and Kokboken in the Student Union Houses at both our campuses.

✉ [info@cremona.se](mailto:info@cremona.se)

🌐 [www.cremona.se](http://www.cremona.se)

☎ +46 31-772 39 45

f [/cremonachalmersbokhandel](https://www.facebook.com/cremonachalmersbokhandel)

🐦 [twitter.com/cremonabookshop](https://twitter.com/cremonabookshop)





## CHALMERS STUDENTKÅR

*Emils Kårhus AB*



## CHALMERS STUDENTKÅR

*Emilias Kårhus AB*

EKAB is owned by Chalmers Student Union. Emils kårhus is an exciting, beautiful and useful house that was created for the students. It consists of open spaces with different furnitures in most corners where you can sit and talk with friends, study or just relax. The house offeres a good selection of restaurants, bookshops, pubs and other membership services.

✉ [info@chalmersstudentbostader.se](mailto:info@chalmersstudentbostader.se)

☎ 031-772 97 00

EmKAB is developing the recreational area in Hårbyda and our vision include getting the "Chalmerska allemansrätt" back (making it really easy to visit the area), creating a space with a wide array of facilities and possibilities, making it possible for different parties to share the area at the same time, providing the extra benefit for Chalmers students and simply just create a space for hanging out, parties, meetings, fun and recreation. Like on campus, but on the country side.

✉ [info@chalmersstudentbostader.se](mailto:info@chalmersstudentbostader.se)

☎ 031-772 97 00

### Want to be on the board?

Our subsidiaries consists to a large amount of students. Beside the students there are also more experiences board members to ensure unique trade knowledge.

Each spring the nomination committee (Valberedningen) elects potential board members - keep an eye on the Student Union website:

🌐 [chalmersstudentkar.se](http://chalmersstudentkar.se)





Chalmers Student Recruitment is the student union's own recruitment agency. Our ambition is to ensure that students at Chalmers get as attractive job offers as possible. We offer everything from beneficial part time jobs to thesis opportunities and employment after graduation. Our clients range from big companies like Dropbox and ABB, to small fast-growing startups.

✉ [info@chalmersrekrytering.se](mailto:info@chalmersrekrytering.se)  
🌐 [www.chalmersrekrytering.se](http://www.chalmersrekrytering.se)  
☎ 031-744 07 24  
f [/chalmersrekrytering](https://www.facebook.com/chalmersrekrytering)



Chalmers Studentkår Promotion works to contribute enriching contacts between enterprises and the students. We are a company driven by students where our employees are given the opportunity to contribute to the development of the company while developing personally. Our passionate commitment and knowledge of what Chalmers wants enables us to create meaningful forums for students and companies to interact with. Want to know more? Visit our website or Facebook!

✉ [info@chspromotion.se](mailto:info@chspromotion.se)  
🌐 [www.chspromotion.se](http://www.chspromotion.se)  
f [/chspromotion](https://www.facebook.com/chspromotion)



Chalmers Studentbostäder has around 2,000 accommodations located close to Chalmers. We prioritises quality, function and service, and has for several years been awarded as the best student accommodations of Sweden. Chalmers Studentbostäder is not included in the Student Union company group, but is a company or quasi-corporate organisation responsible to the Student Union Council.

✉ [info@chalmersstudentbostader.se](mailto:info@chalmersstudentbostader.se)  
🌐 [www.chalmersstudentbostader.se](http://www.chalmersstudentbostader.se)  
☎ 031-772 97 00



CTK is the company within Chalmers Student Union where students get the opportunity to turn theoretical into practical knowledge through technologically and economically advanced consultancy projects alongside with their studies. As a student you receive valuable experience from problems encountered in the industry which helps you develop skills such as sales of professional services and project management.

✉ [info@ctk.se](mailto:info@ctk.se)  
🌐 [www.ctk.se](http://www.ctk.se)  
☎ 031 - 772 83 32  
f [/chalmerssteknologkonsulter](https://www.facebook.com/chalmerssteknologkonsulter)







# Student Divisions

*Your Student Division is your local and closest representative when it comes to educational affairs and student welfare. It is also they who welcome each student to their very own division each year (NollK). Their statute are approved by the Union and the divisions have their own board and committees. All members have the right to vote during the division meeting, which is the highest decision making body within the division.*

.....

- Arkitekturstuderandesektionen
- Affärsutveckling och entreprenörskap
- Datateknologsektionen
- Doktorandsektionen
- Elektroteknologsektionen
- Fysikteknologsektionen
- Ingenjörteknologsektionen
- Teknologsektionen Industriell Ekonomi
- Teknologsektionen Informationsteknik
- Kemiteknologsektionen

- Teknologsektionen för Kemiteknik med Fysik och Bioteknik
- Maskinteknologsektionen
- Sjösektionen
- Teknisk Design
- V-teknologsektionen Samhällsbyggnad
- Teknologsektionen för Automation och Mekatronik

.....



## Arkitekturstuderandesektionen

[www.a-sektionen.se](http://www.a-sektionen.se)

### A- & AT-styret

[www.a-sektionen.se](http://www.a-sektionen.se)

#### A6

[a6@lists.chalmers.se](mailto:a6@lists.chalmers.se)

#### A-laget

#### AnollK

#### ATU

[ATU@lists.chalmers.se](mailto:ATU@lists.chalmers.se)

#### Arkipelago Göteborg

[arkipelago.nu](http://arkipelago.nu)

#### PubA

## Teknologsektionen för Affärsutveckling och Entreprenörskap inom samhällsbyggnadsteknik

[www.aetek.se](http://www.aetek.se)

### Æ-styret

[www.aetek.se](http://www.aetek.se)

#### AE-arm

[aearm@aetek.chalmers.se](mailto:aearm@aetek.chalmers.se)

#### ÆØK

[aenollk@aetek.chalmers.se](mailto:aenollk@aetek.chalmers.se)

#### PRÆX

[praex@aetek.chalmers.se](mailto:praex@aetek.chalmers.se)

#### SNÆ

[snae@aetek.chalmers.se](mailto:snae@aetek.chalmers.se)

## Datateknologsektionen

[www.dtek.se](http://www.dtek.se)

### D-Styret

[www.dtek.se/wiki/styret](http://www.dtek.se/wiki/styret)

#### Datas Nämnd för Studier DNS

[dns.dtek.se](mailto:dns.dtek.se)

#### DAG

[www.datateknologer.se](http://www.datateknologer.se)

#### DNollk

[www.dnollk.se](http://www.dnollk.se)

#### D6

[D6@dtek.se](mailto:D6@dtek.se)

#### Delta

[delta@dtek.se](mailto:delta@dtek.se)

#### DFoto

[www.dfoto.se](http://www.dfoto.se)

#### DMNollk

[dmnollk@dtek.se](mailto:dmnollk@dtek.se)

#### DRust

[drust@dtek.se](mailto:drust@dtek.se)

#### IDrott

[idrott@dtek.se](mailto:idrott@dtek.se)

#### Datas Ludologer

[dlude@dtek.se](mailto:dlude@dtek.se)

#### DHack

[dhack@dtek.se](mailto:dhack@dtek.se)

#### DBrus

[dbrus@dtek.se](mailto:dbrus@dtek.se)

#### D-Lirium

## Doktorandsektionen

[www.dokt.chs.chalmers.se](http://www.dokt.chs.chalmers.se)

### Doktorandsektionens styrelse

<http://dokt.chs.chalmers.se>

## Elektroteknologsektionen

[etek.chalmers.se](http://etek.chalmers.se)

### E-styret

[etek.chalmers.se](http://etek.chalmers.se)

#### E6

<http://e6.etek.chalmers.se>

#### EKAK

[www.EKAK.org](http://www.EKAK.org)

#### EØK

[e0k@etek.chalmers.se](mailto:e0k@etek.chalmers.se)

## Fysikteknologsektionen

[ftek.se](http://ftek.se)

### F-styret

<https://www.ftek.se/styret/>

#### SNF

<https://www.ftek.se/snftm/>

#### FARM

[farmchalmers.se](http://farmchalmers.se)

#### FnollK

[fnollk.com](http://fnollk.com)

#### F6

<https://www.ftek.se/f6/>

### Djungelpatrullen (DP)

<https://www.ftek.se/djungelpatrullen/>

#### Focumateriet

<https://www.ftek.se/focumateriet/>

#### FIF

<https://www.ftek.se/fif/>

## Ingenjörsteknologsektionen

[www.htek.se](http://www.htek.se)

### H-styret

[www.htek.se](http://www.htek.se)

#### DKV

[DKV.se](http://DKV.se)

### DSC - Droopy Sport Club

[droopysportclub.se](http://droopysportclub.se)

**H6**

Facebook

**HArm**

[www.htek.se/](http://www.htek.se/)

**HD**

<https://hd.chalmers.se>

**HNollK**

[www.nollk.se](http://www.nollk.se)

**H-pHoto**

[www.h-photo.se](http://www.h-photo.se)

**Rustet**

[www.rustet.nu](http://www.rustet.nu)

**HSIF**

Facebook

**SnH**

[www.htek.se](http://www.htek.se)



## Teknologsektionen Industriell Ekonomi

<http://i-chalmers.se/>

### Styrelsen Industriell ekonomi

<http://i-chalmers.se/kommitteer/styrelsen/>

**isex**

<http://i-chalmers.se/kommitteer/isex/>

**QQ7**

<http://i-chalmers.se/kommitteer/qq7/>

**INollK**

<http://i-chalmers.se/kommitteer/inollk/>

**Estiem-styrelsen**

<http://i-chalmers.se/kommitteer/estiem-styrelsen/>

**drikk**

<http://i-chalmers.se/kommitteer/drikk/>

**i-Bild**

<http://i-chalmers.se/kommitteer/i-bild/>

**Rustl**

<http://i-chalmers.se/kommitteer/rustl/>

**IF**

<http://i-chalmers.se/kommitteer/if/>

**SNI**

<http://i-chalmers.se/kommitteer/sni/>

**I-Armar**

<http://i-chalmers.se/kommitteer/i-armar/>

**IQiren**

<http://i-chalmers.se/kommitteer/iqiren/>

**Berkley Kommittén**

<http://i-chalmers.se/kommitteer/berkeley/>

## Teknologsektionen Informationsteknik

[www.chalmers.it](http://www.chalmers.it)

**styriT**

<https://styrit.chalmers.it/>

**snIT**

<https://chalmers.it/committees/snit>

**ArmiT**

<https://chalmers.it/committees/armit>

**Masters Reception Commitee**

<https://chalmers.it/committees/mrcit>

**NollKIT**

<https://nollk.it/>

**P.R.I.T.**

<https://prit.chalmers.it/>

**sexIT**

<https://sexit.chalmers.it/>

**digit**

<https://digit.chalmers.it/>

**FanbärerIT**

<https://chalmers.it/committees/fanbarerit>

**drawIT**

<https://chalmers.it/committees/drawit>

**8-bit**

<https://chalmers.it/committees/8bit>

**frITid**

<https://chalmers.it/committees/fritid>

**FlashIT**

<https://chalmers.it/committees/flashit>

**LaggIT**

<https://chalmers.it/committees/laggit>

**FikIT**

<https://chalmers.it/committees/fikit>

**HookIT**

<https://chalmers.it/committees/hookit>

## Kemiteknologsektionen

[www.kemisektionen.com](http://www.kemisektionen.com)

### Kemistytret

[kstyret@chestud.chalmers.se](mailto:kstyret@chestud.chalmers.se)

### HÄKS

[khaex@chestud.chalmers.se](mailto:khaex@chestud.chalmers.se)

### ifk

[ifk@chestud.chalmers.se](mailto:ifk@chestud.chalmers.se)

### K6

[k6@chestud.chalmers.se](mailto:k6@chestud.chalmers.se)

### KARG

[karg@chestud.chalmers.se](mailto:karg@chestud.chalmers.se)

### Kempresen

[kempres@chestud.chalmers.se](mailto:kempres@chestud.chalmers.se)

### KUU

[kuu@chestud.chalmers.se](mailto:kuu@chestud.chalmers.se)

### KVAL

[kval@chestud.chalmers.se](mailto:kval@chestud.chalmers.se)

### KØK

[knollk@chestud.chalmers.se](mailto:knollk@chestud.chalmers.se)

## Teknologsektionen för Bioteknik samt Kemiteknik med fysik

[www.kfkb.se](http://www.kfkb.se)

### KfKb-styret

[styret@kfkb.se](mailto:styret@kfkb.se)

### bøf

[b0f@kfkb.se](mailto:b0f@kfkb.se)

### Ernst

[ernst@kfkb.se](mailto:ernst@kfkb.se)

### GP

[gp@kfkb.se](mailto:gp@kfkb.se)

### KAOS

[kaos@kfkb.se](mailto:kaos@kfkb.se)

### KfIK

[kfik@kfkb.se](mailto:kfik@kfkb.se)

### KfKb6

[kfkb6@kfkb.se](mailto:kfkb6@kfkb.se)

### KK

[kk@kfkb.se](mailto:kk@kfkb.se)

### SNKfKb

[sn@kfkb.se](mailto:sn@kfkb.se)



## Maskinteknologsektionen

[www.mtek.chalmers.se](http://www.mtek.chalmers.se)

### M-styret

<http://mtek.chalmers.se/sektionen/m-styret/>

### M.A.K.

<http://mtek.chalmers.se/mak/>

### M-sex

<http://mtek.chalmers.se/msex/>

### MISS

<http://mtek.chalmers.se/miss/>

### MnollK

<http://mtek.chalmers.se/mnollk/>

### Rustmästeriet

<http://mtek.chalmers.se/rustet/>

### MGK

<http://mtek.chalmers.se/mgk/>

### MARM

<http://www.marm.se>

### MUU

<http://mtek.chalmers.se/muu/>

### XP

<http://x-p.nu>

### MIL

<http://mtek.chalmers.se/mil/>

### Caster

<http://www.casterchalmers.se>

### M-Ord

<http://mtek.chalmers.se/m-ord/>

## Sjösektionen

[www.sjosektionen.se](http://www.sjosektionen.se)

### Sjöstyret

[www.sjosektionen.se](http://www.sjosektionen.se)

### Dickson IF

[sjosektionen@yahoo.se](mailto:sjosektionen@yahoo.se)

**Teknisk Design**  
[www.tekniskdesign.se](http://www.tekniskdesign.se)

**TD-styret**  
[styret@tdtek.chalmers.se](mailto:styret@tdtek.chalmers.se)  
**prosex.**  
[prosex@tdtek.chalmers.se](mailto:prosex@tdtek.chalmers.se)  
**SNTD**  
[sntd@tdtek.chalmers.se](mailto:sntd@tdtek.chalmers.se)  
**TDIaget**  
[tdjobb@tdtek.chalmers.se](mailto:tdjobb@tdtek.chalmers.se)  
**TDjobb**  
[tdjobb@tdtek.chalmers.se](mailto:tdjobb@tdtek.chalmers.se)  
**TDnollK**  
[tdnollk@tdtek.chalmers.se](mailto:tdnollk@tdtek.chalmers.se)

## V-teknologsektionen Samhällsbyggnad

[www.vtek.se](http://www.vtek.se)

**V-styret**  
[www.vtek.se/styret](http://www.vtek.se/styret)

**FOTE**  
[www.vtek.se/fote](http://www.vtek.se/fote)

**Jämställdhetsdagarna (a.k.a. Vequality)**  
[www.vtek.se/jamstalldhetsdagarna](http://www.vtek.se/jamstalldhetsdagarna)

**Kafferepet**  
[www.vtek.se/kafferepet](http://www.vtek.se/kafferepet)

**SNOK**  
[www.vtek.se/snok](http://www.vtek.se/snok)

**SNV**  
[www.vtek.se/snv](http://www.vtek.se/snv)

**Trädgårdsmästeriet**  
[www.vtek.se/tgm](http://www.vtek.se/tgm)

**V6**  
[www.vtek.se/v6](http://www.vtek.se/v6)

**V-Balk**  
[www.vtek.se/v-balk](http://www.vtek.se/v-balk)

**VARG**  
[www.vtek.se/varg](http://www.vtek.se/varg)

**Vattentrycket**  
[www.vtek.se/vattentrycket](http://www.vtek.se/vattentrycket)

**VIC-IACES**  
[www.vtek.se/vic-iaces](http://www.vtek.se/vic-iaces)

**VIRUS**  
[www.vtek.se/virus](http://www.vtek.se/virus)

**VoVPT**  
[www.vtek.se/vovpt](http://www.vtek.se/vovpt)

**VØK**  
[www.vtek.se/vnollk](http://www.vtek.se/vnollk)

**WHisk**  
[www.vtek.se/whisk](http://www.vtek.se/whisk)

## Z-teknologsektionen

[ztek.se](http://ztek.se)

**Ztyret**  
[ztyret@ztek.se](mailto:ztyret@ztek.se)

**ArgZ**  
[argz.se](http://argz.se)

**DaltonZ**  
[daltonz@ztek.se](mailto:daltonz@ztek.se)

**SNZ**  
[snz@ztek.se](mailto:snz@ztek.se)

**ZEXET**  
[zexet@ztek.se](mailto:zexet@ztek.se)

**Zenith**  
[zenith@ztek.se](mailto:zenith@ztek.se)

**ZIK**  
[zik@ztek.se](mailto:zik@ztek.se)

**ZIG**  
[pluggaz.se](http://pluggaz.se)

**ZØK**  
[znollk.se](http://znollk.se)



# 3 steps to an easier student life

*-put your Student Union card to work!*

## 1. Become a member.

When you've paid your fee a card will arrive shortly after. Make sure to check your address information to ensure that it's you, and not someone else, who gets the card. Log on to [medlem.chs.chalmers.se](http://medlem.chs.chalmers.se) with your CID (Chalmers ID). You can also print a receipt of your payment or a new invoice.



## 2. Top up.

You got the card - congratulations! The smart thing to do now is to top up your card. You can either do a single top up or have it done automatically so you're never out of cash. Go to [www.chalmerskonferens.se/gastkarkort/karkort](http://www.chalmerskonferens.se/gastkarkort/karkort)

## 3. Use it.

You're there! Now you can use your card in all Student Union shops and restaurants on both campuses. Where there is a discount you'll never miss it - it'll be adjusted automatically when you pay with your card.



*And apart from the local benefits you also get a lot of discounts through Mecenat. More on [mecenat.se](http://mecenat.se)*



**Read more about the restaurants, cafés and pubs on p. 34**

- 



What are my membership benefits?

How does the Student Union work?

This is your guide to the student life at Chalmers. Hopefully you'll have a clearer view on what the Student Union does for you after reading it and how you and your friends can create and connect during your time at Chalmers.

How can I get involved in all the fun?

How do I get the most of my time at Chalmers?